



# IN-ROAD CROSSWALK SYSTEM

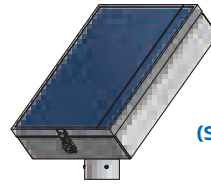
Designed to target the tunnel vision of today's distracted drivers

OVERVIEW

## IN-ROAD LED LIGHTED CROSSWALKS

The LaneLight system creates a barrier of bright flashing lights directly in the driver's line of sight.

- Ideal for mid-block crosswalks
- Industry leading ultra-bright > 3.5 million candela / m2 output
- 3000 foot daytime visibility
- Targets the tunnel vision of a distracted driver
- Low Profile: Snowplow Safe / Bicycle Safe
- Standard or enhanced flash patterns
- Passive activation options available
- Solar or AC power configurations
- Self cleaning design / Near Zero maintenance
- MUTCD Compliant/ FDOT Approved



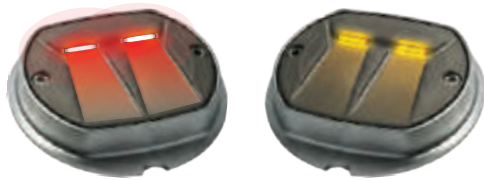
Top Pole Mount Enclosure  
(Side of Pole Optional)



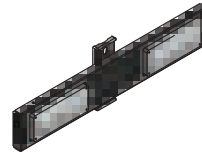
SN-LED-W112



SN-LED-S11



In-Road Warning Light (IRWL)



Rectangular Rapid Flashing Beacon (RRFB)

